

This is an intro to the property

Townhouse

For Sale: £585,000.00

22 Victoria Park, Bristol, City of Bristol BS1



Details:

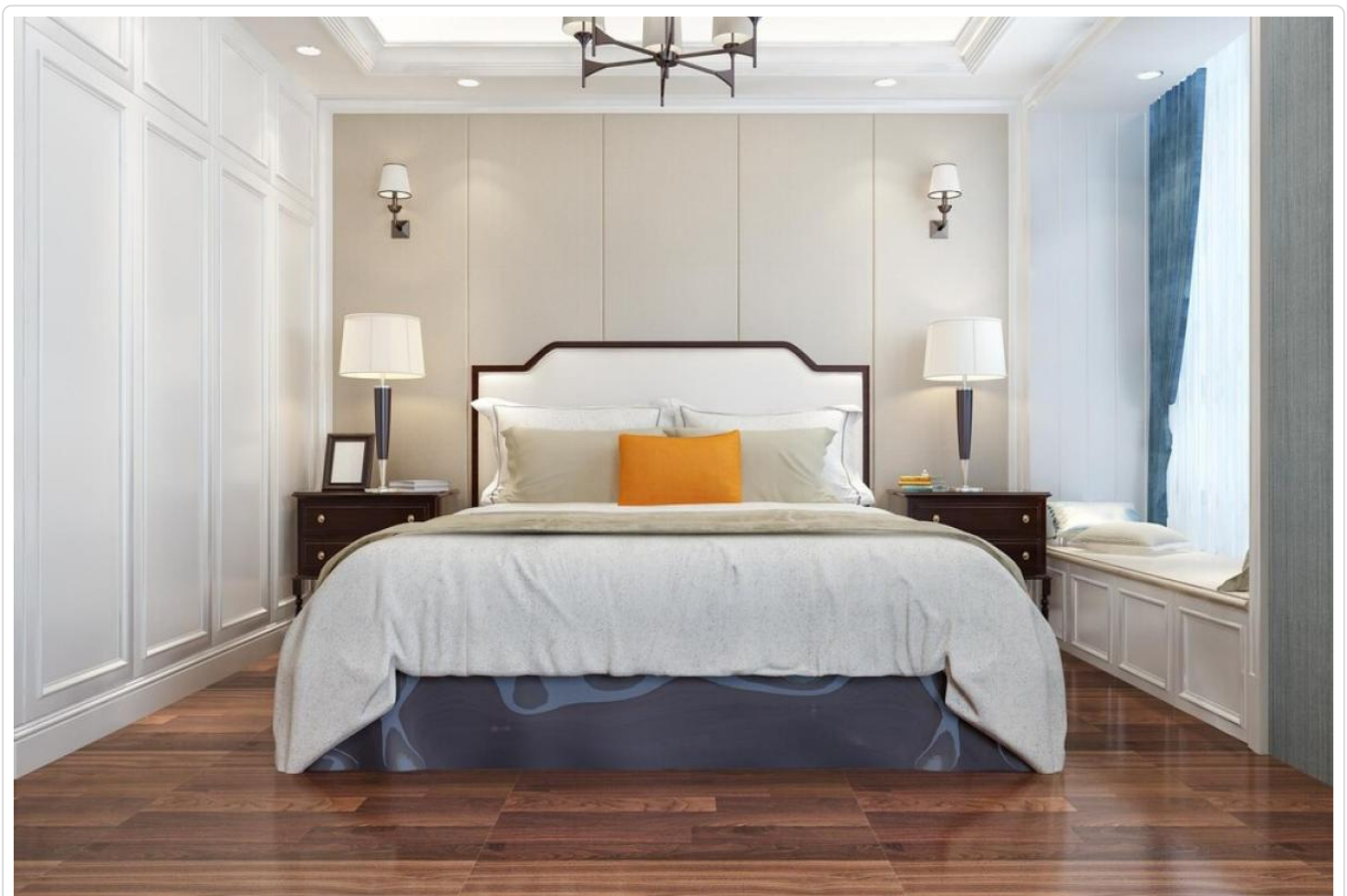
Available from: 2024-08-06 | Furnished: No | Parking: Yes | Deposit: £0.00 | Council Tax Band: A

Property Features:

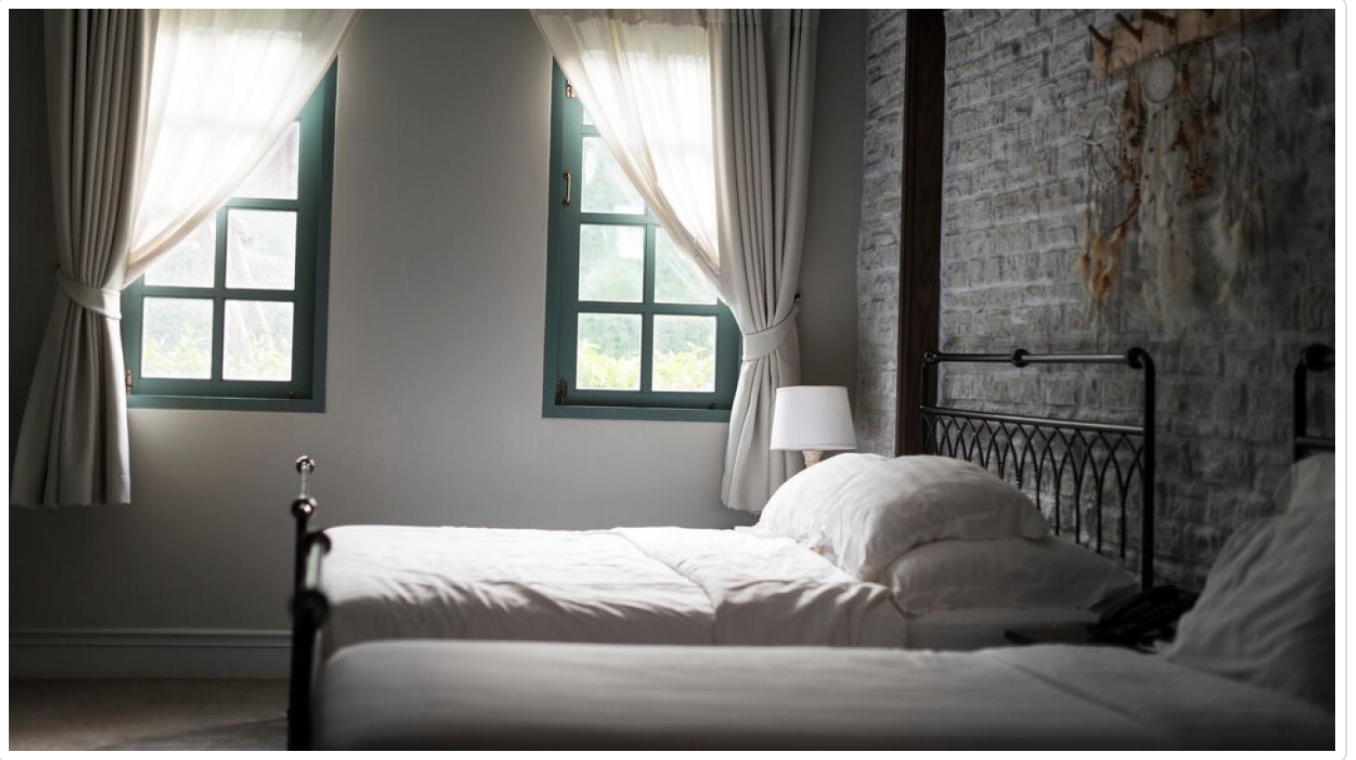
Near to Good Schools
Walking Distance to Shops

Charming 3-Bedroom Townhouse in Victoria Park, Bristol Welcome to 22 Victoria Park, a beautifully presented three-bedroom townhouse offering modern living in a historic setting. Located in the vibrant heart of Bristol, this home is the perfect combination of character and contemporary style, offering comfort, convenience, and stunning views of the nearby green spaces. Priced attractively at £470,000, this property is ideal for families, professionals, or those looking to invest in a dynamic area. Ground Floor As you step into the property, you are welcomed by a bright and spacious entrance hallway, with sleek wooden flooring and neutral décor setting the tone for the rest of the home. To your left, the open-plan living and dining area is perfect for both relaxing and entertaining. Large sash windows flood the space with natural light, creating a warm and inviting atmosphere. A central feature fireplace adds character to the living room, while the dining area comfortably accommodates a full-sized dining table, ideal for family meals or gatherings. The rear of the ground floor houses a contemporary kitchen with modern appliances, including a built-in oven, gas hob, and integrated dishwasher. Crisp white cabinetry and polished countertops offer ample storage and workspace. French doors from the kitchen lead directly to a private garden, perfect for outdoor dining or simply enjoying a quiet moment surrounded by greenery. First Floor Upstairs, you'll find two generously sized bedrooms. The master bedroom is an elegant retreat, featuring plush carpeting, a built-in wardrobe, and large windows that offer views over Victoria Park. The second bedroom, equally

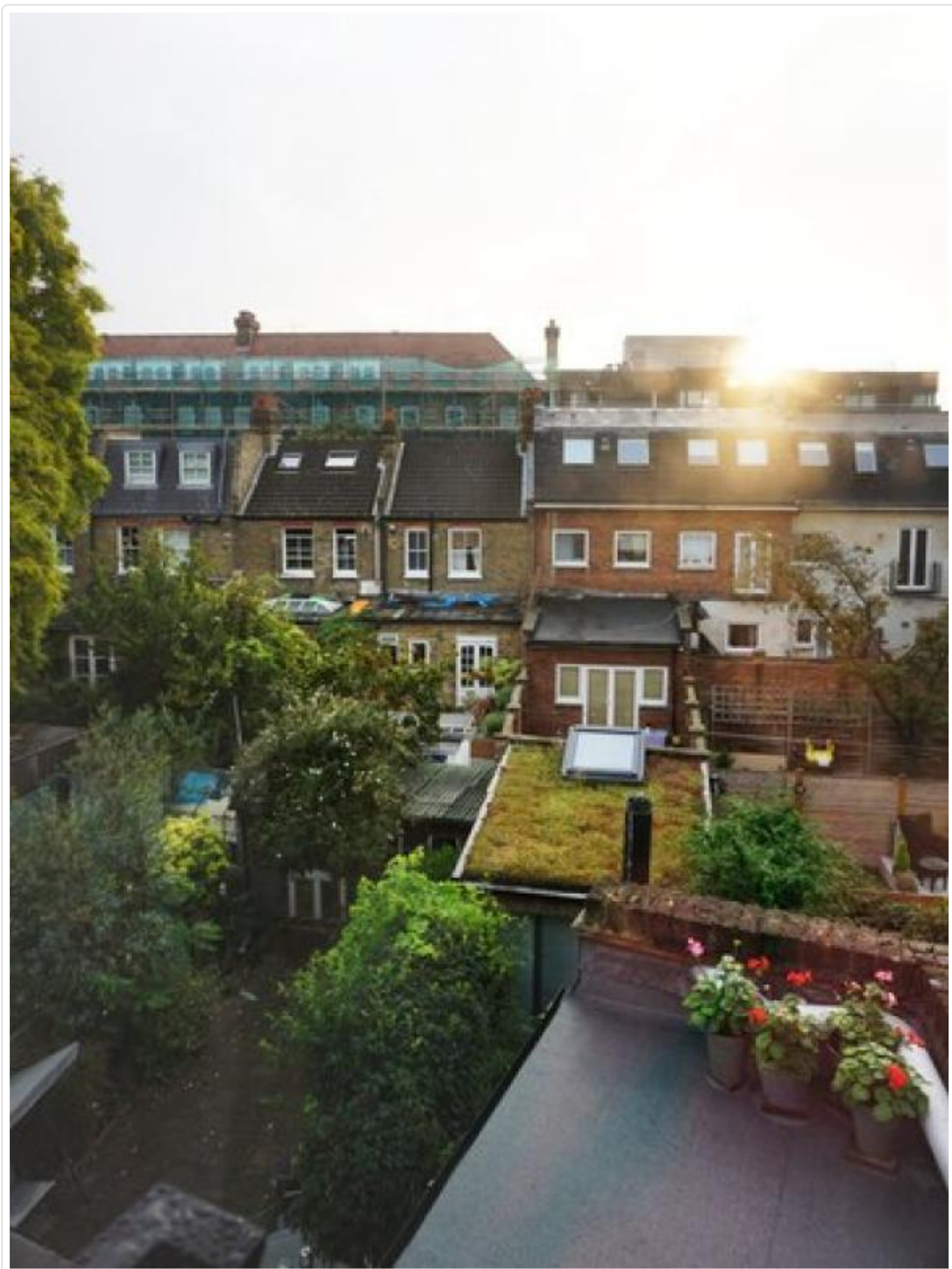
spacious, is perfect for a guest room or a child's bedroom. Both rooms share a modern family bathroom, complete with a luxurious bathtub, stylish tiling, and a heated towel rail for added comfort. **Top Floor** The third bedroom occupies the top floor and is a versatile space, ideal for a home office, studio, or additional bedroom. With Velux windows, this room enjoys plenty of natural light and offers beautiful views of the Bristol skyline and park. An en-suite shower room with contemporary fixtures completes this floor, adding privacy and convenience for guests or family members. **Outdoor Space** The private garden at the rear of the property is a delightful outdoor haven. Fully enclosed and low maintenance, it offers a combination of a paved patio area, perfect for alfresco dining, and a small lawned area surrounded by mature shrubs. A wooden shed provides additional storage for outdoor equipment or gardening tools. **Location** Situated in the sought-after area of Victoria Park, this townhouse benefits from an unbeatable location. The picturesque Victoria Park itself is just a stone's throw away, providing open green space for outdoor activities, family picnics, or morning jogs. The property is also within walking distance of Bristol's bustling city center, with its array of shops, restaurants, and cultural attractions. Excellent transport links are easily accessible, including nearby bus routes and Bristol Temple Meads station, offering direct services to London, Bath, and beyond. **Key Features:** Beautifully presented 3-bedroom townhouse Spacious living and dining area with natural light Modern kitchen with direct access to private garden Master bedroom with park views Additional top-floor bedroom with en-suite Private rear garden, ideal for outdoor living Prime location near Victoria Park and city center Excellent transport links and local amenities



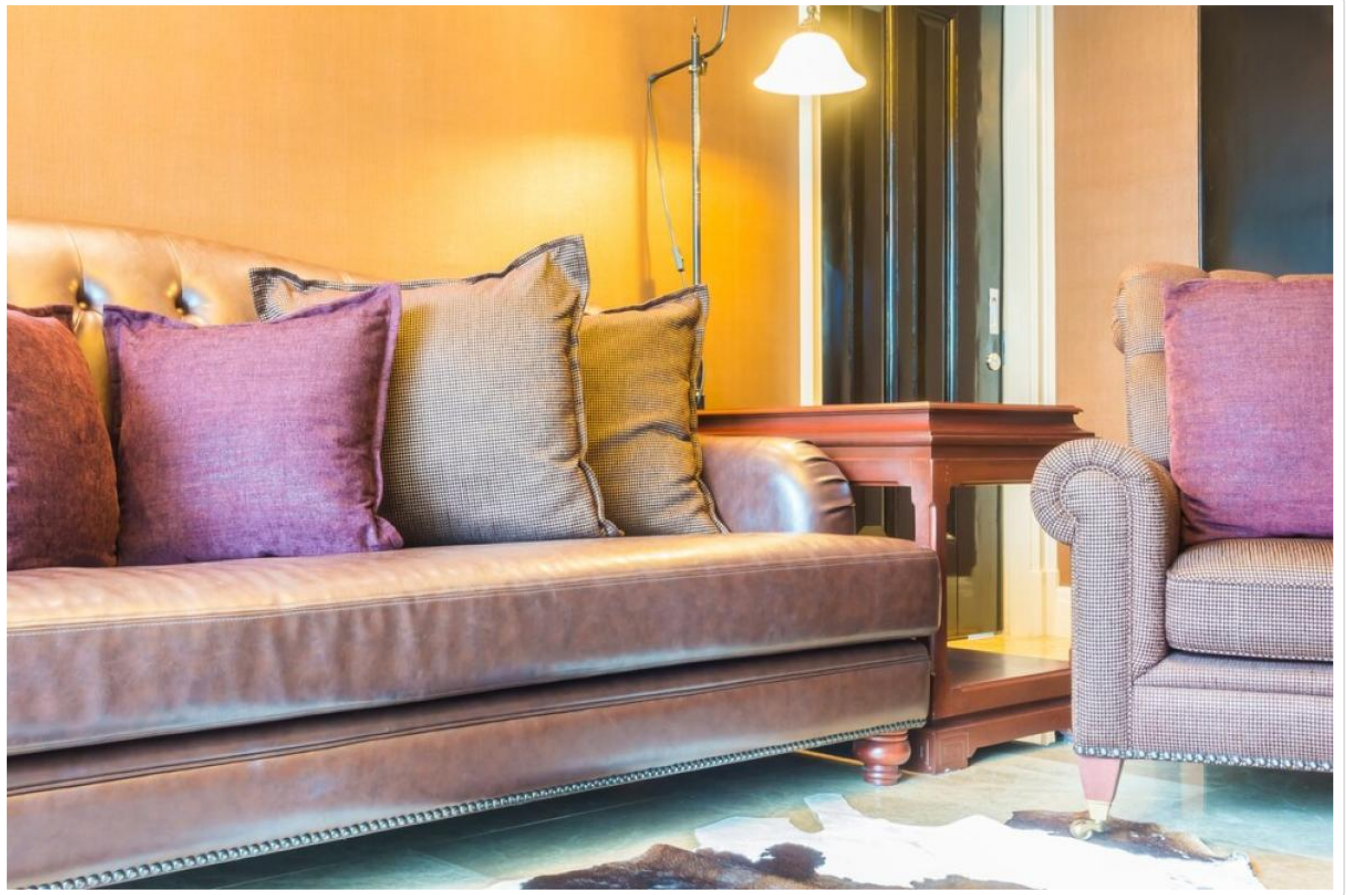




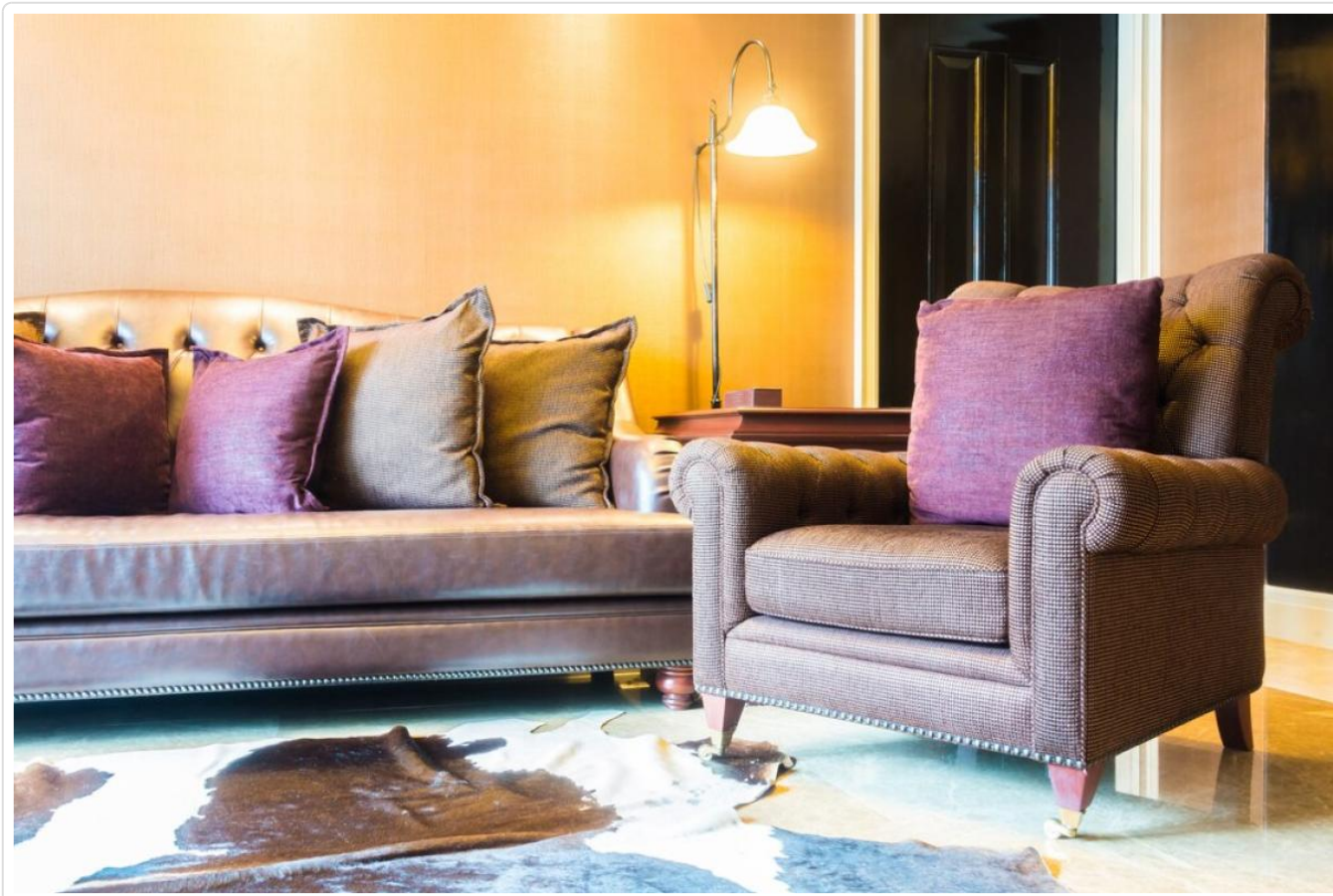
















These particulars are intended as a guide only.